

TES Electronic Solutions

guiliani

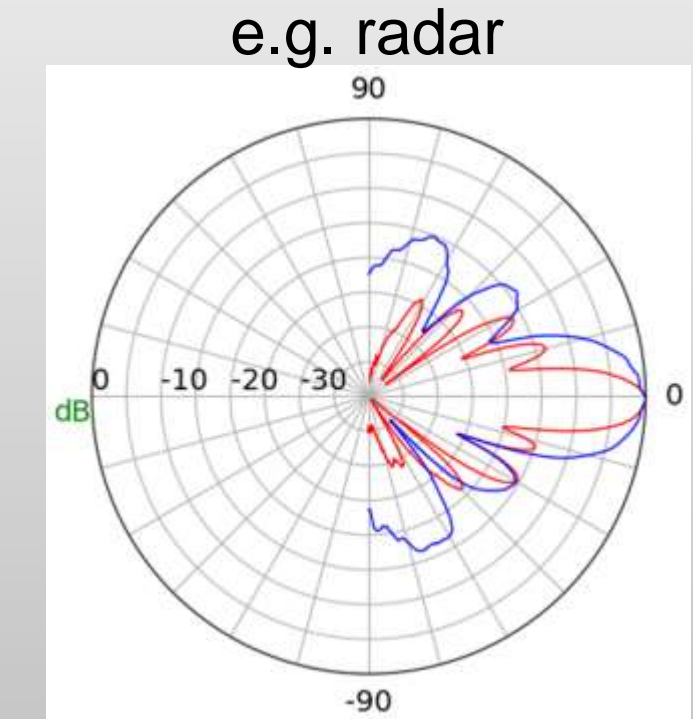
Overview 3Q24

www.guiliani.de

info@guiliani.de

Guiliani is a TES Electronic Solutions original software product

- TES is a **Technology and Design Services Company** based in Germany with a global customer base.
- 90 employees, 90% engineers
- **Embedded software, Graphics, RF such as radar and chip design including mixed signal, FPGA**
- We Create – Design – Manufacture
- **Close Semiconductor Industry Partner** for 20 years, in all imaginable applications...



Guiliani Differentiators – Why Guiliani?

- **Guiliani is a software framework for creating stylish Graphical User Interfaces on any embedded hardware**
- Fast, easy, professional! Time-proven in millions of embedded systems!

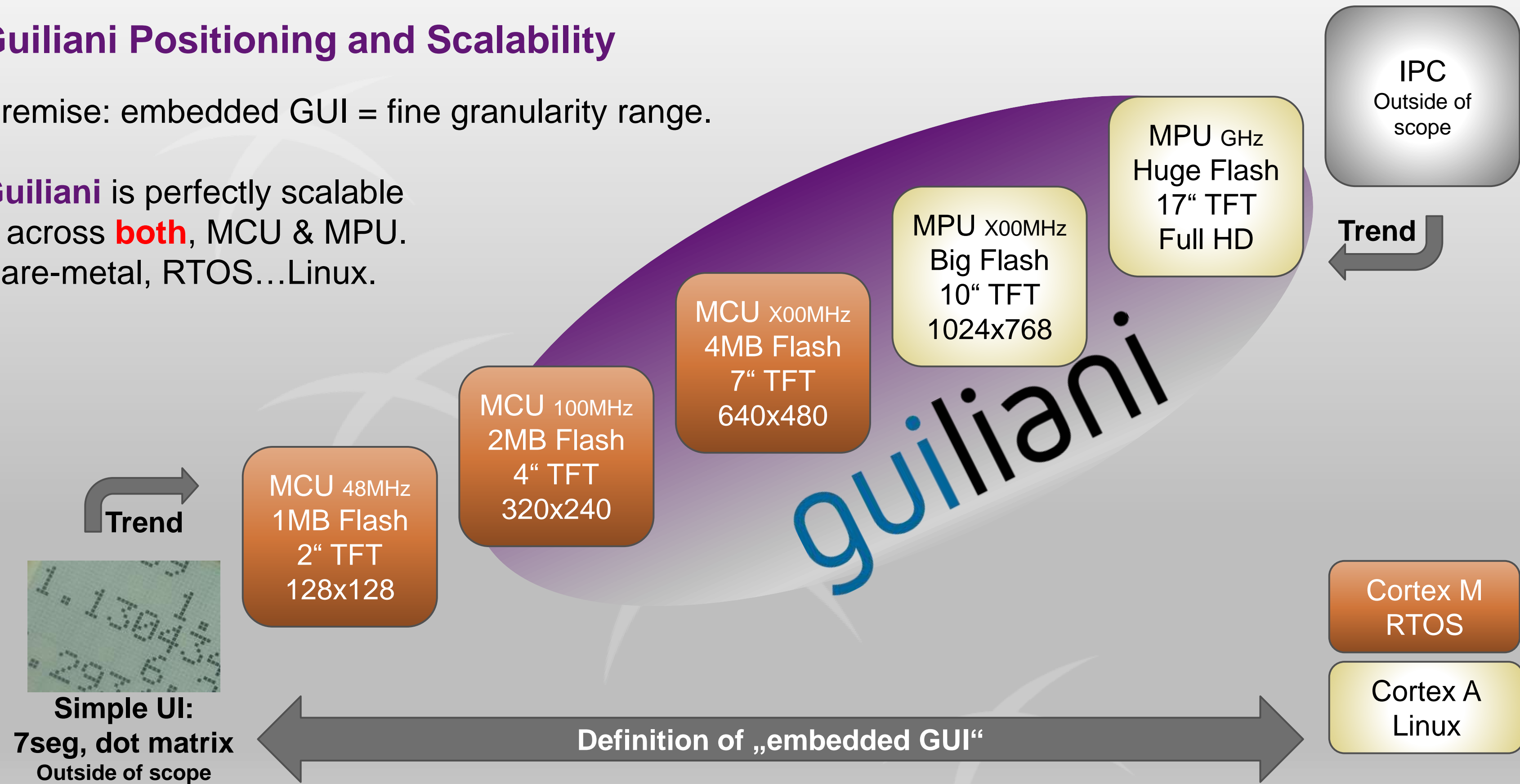
Top 5 reasons to choose Guiliani, based on customer testimonials	Your Benefit
Powerful , modern object-orientated C++ GUI software	Fast time to market
Intuitive WYSIWYG Guiliani Streaming Editor (GSE)	Get work done quickly
Innovative streaming of graphics assets	Supports teamwork
Scalable from MCU to MPU, from bare metal to Linux	Learn once, develop many
Best-in-class technical support & services	Projects on time, on budget

Flexible Business Model to meet your commercial needs as well

Guiliani Positioning and Scalability

Premise: embedded GUI = fine granularity range.

Guiliani is perfectly scalable across **both**, MCU & MPU. Bare-metal, RTOS...Linux.



Guiliani selected benchmarks



Guiliani Customer Voices

“This proved to be a great partnership,
as both companies <TES and Renesas> provided **solid technical support**
throughout the development”

S.F., Head of Engineering at customer L., UK

“**We are really enjoying using Guiliani:**
basic controls and behaviors are very easy to handle
with the provided example project and with only a few application code
one can do **really powerful and amazing stuff!** Simulator is also a great feature...”

X.R., R&D at customer R., France

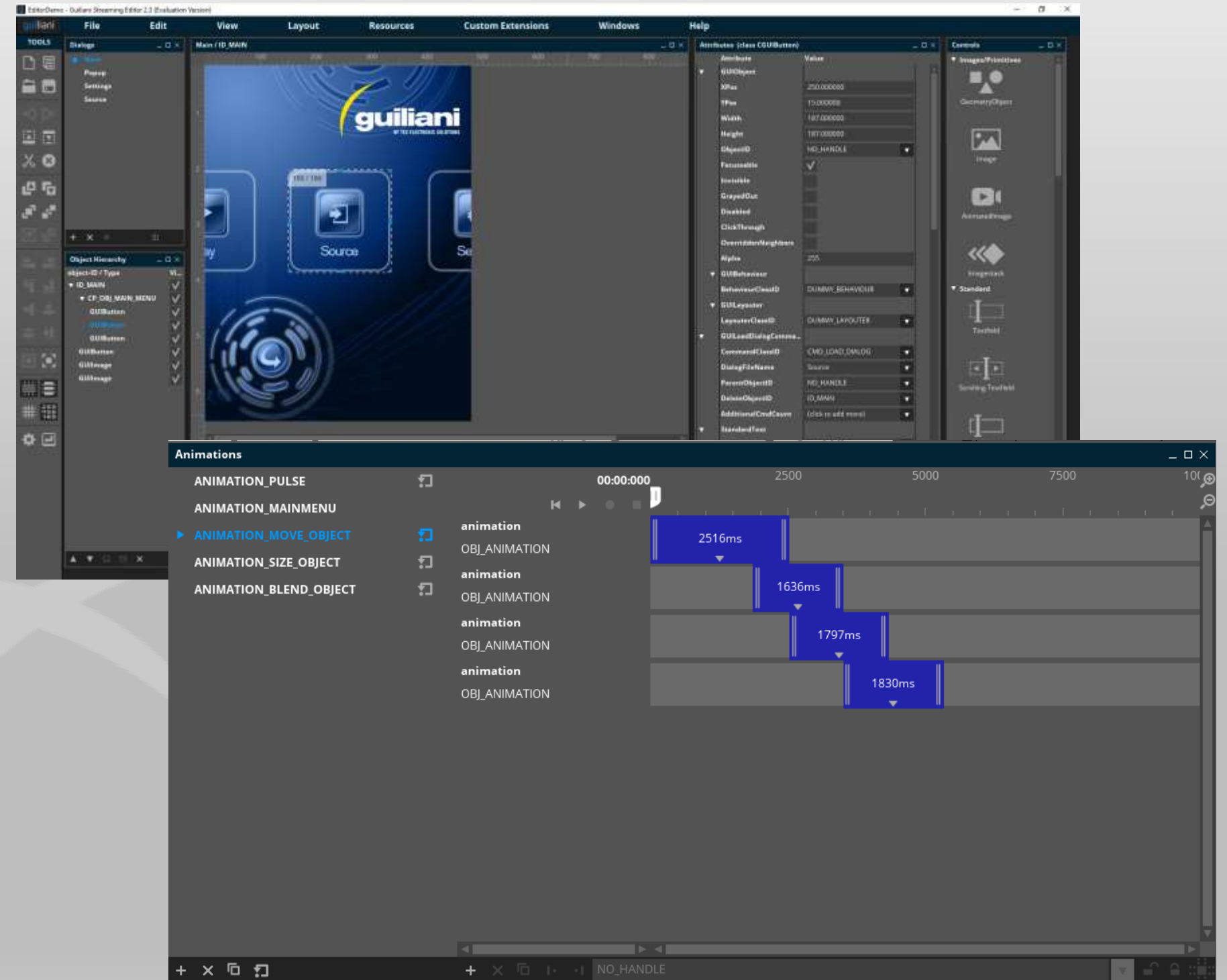
“I am compiling my **very positive results**
for my management team.”

M.S., R&D at customer M., USA
upon completion of a deep-dive evaluation
with creation of a „Proof of Concept“

“As easy as powerpoint!”
Distribution FAE

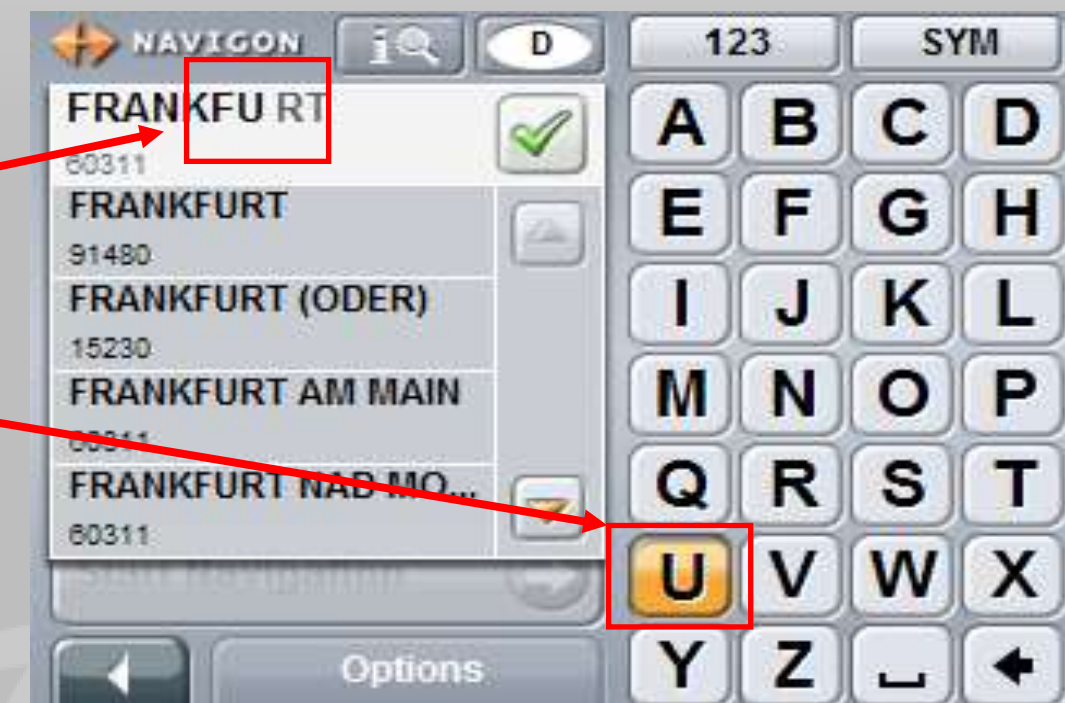
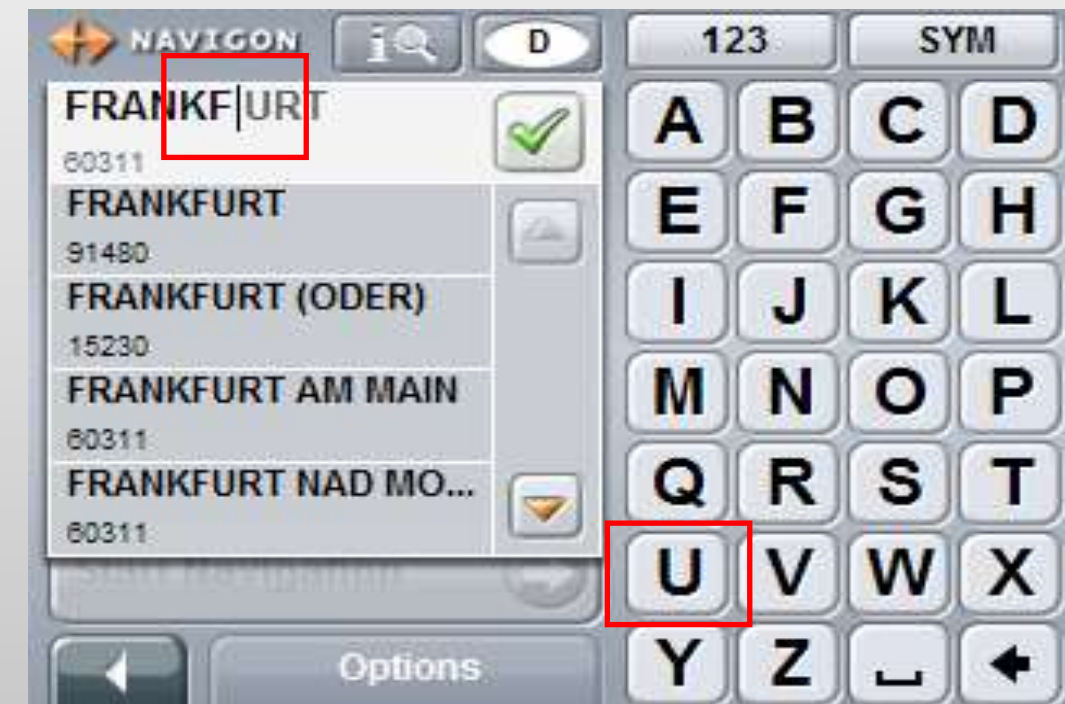
Guiliani Technologies at a glance (1)

- Modern, **object-oriented C++ framework**, easily interacts with ANSI C, of course
- The Guiliani Streaming Editor (GSE) is intuitive to use and runs on Guiliani too (!), therefore it can easily simulate your GUI on your PC even **before you have target hardware**
- Cool **animations** editing to easily create even complex animations within minutes
- GSE available under Windows & Linux

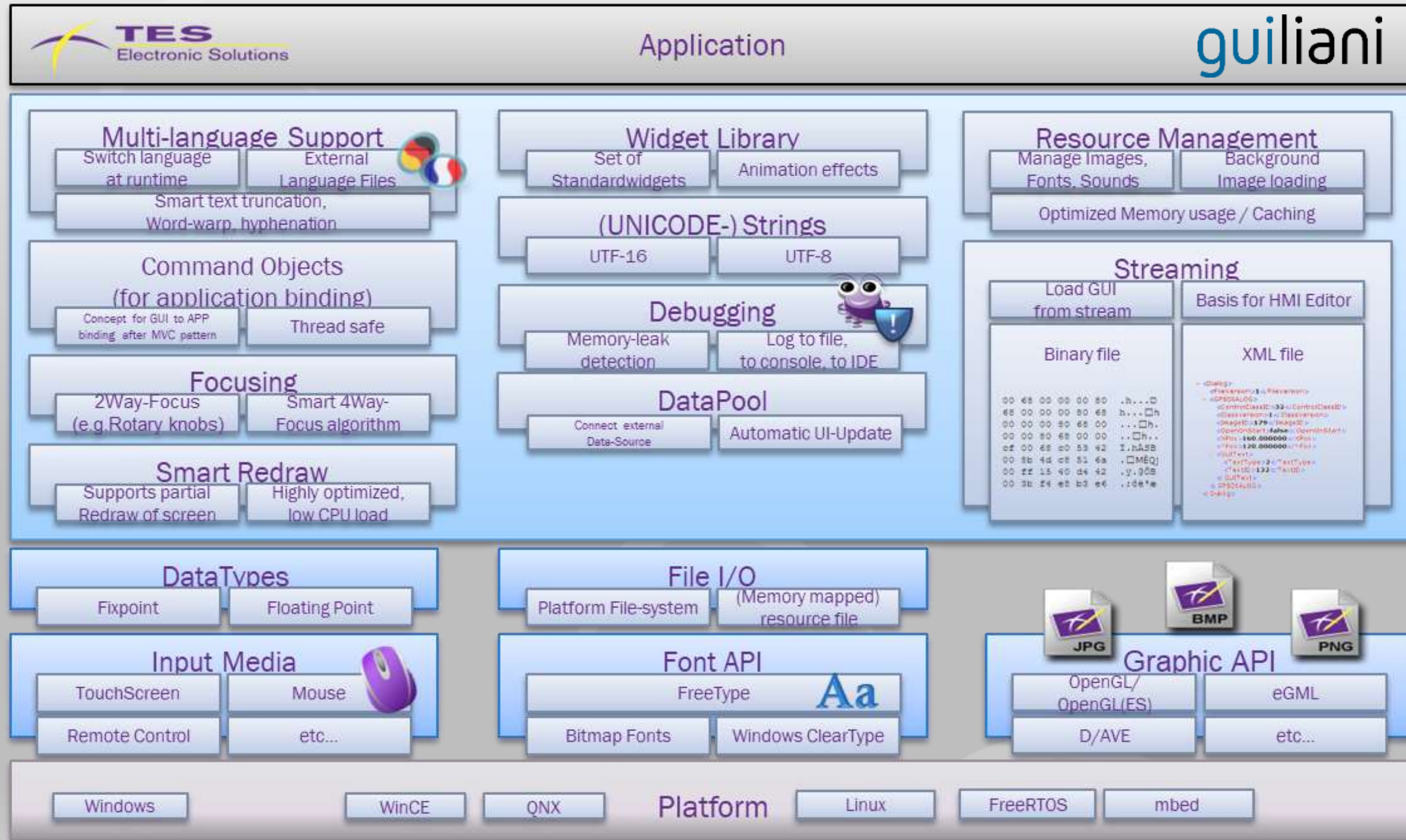


Guiliani Technologies at a glance (2)

- Modular Design = customizable, portable, efficient
- **Guiliani Streaming Engine creates the user interface at run-time using XML/binary = agile!**
- Highly optimized utilization of D/AVE GPUs, because we know every line of code in Guiliani and every single gate in D/AVE GPUs...
- **Smart, partial redraw saves performance and bandwidth**
- Performance Profiling Tools keep engineers in the know



Guiliani Technologies at a glance (3)



Guiliani Feature Examples (the list goes on...)

<p>MAIN MENU</p> <p>TES Electronic Solutions guiliani</p>	<p>SLIDER</p> <p>TES Electronic Solutions BUTTONS SLIDER SLIDER guiliani</p>	<p>SLIDER</p> <p>TES Electronic Solutions BUTTONS SLIDER SLIDER guiliani</p>	<p>KNOBS</p> <p>TES Electronic Solutions KNOBS DATE/TIME GAUGE guiliani</p>
<p>DATE/TIME</p> <p>TES Electronic Solutions KNOBS DATE/TIME GAUGE guiliani</p>	<p>GAUGE AND WHEEL</p> <p>TES Electronic Solutions KNOBS DATE/TIME GAUGE guiliani</p>	<p>KEYBOARD</p> <p>TES Electronic Solutions guiliani</p>	<p>TEXT</p> <p>ONE MORNING, AS GREGOR SAMSA WAS WAKING UP FROM ANXIOUS DREAMS, HE DISCOVERED THAT IN HIS BED HE HAD BEEN CHANGED INTO A MONSTROUS VERMINOUS BUG. HE LAY ON HIS ARMOUR-HARD BACK AND SAW, AS HE LIFTED HIS HEAD UP A LITTLE, HIS BROWN, ARCHED ABDOMEN DIVIDED UP INTO RIGID BOW-LIKE SECTIONS. FROM THIS HEIGHT THE BLANKET, JUST ABOUT READY TO SLIDE OFF COMPLETELY, COULD HARDLY STAY IN PLACE. HIS NUMEROUS LEGS, PITIFULLY THIN IN COMPARISON TO THE REST OF HIS CIRCUMFERENCE, FLICKE...</p> <p>TES Electronic Solutions guiliani</p>
<p>CAROUSEL</p> <p>TES Electronic Solutions CAROUSEL CONTAINER CONTAINER guiliani</p>	<p>VIDEO</p> <p>TES Electronic Solutions ANIMATION EASING VIDEO guiliani</p>	<p>CHART</p> <p>TES Electronic Solutions CHART GRAPH PLOT guiliani</p>	<p>SETTINGS</p> <p>TES Electronic Solutions guiliani GUILIANI V2.4.XXXX GFX: EGML PLATFORM: X86, WIN32, MSVC</p>

New! Guiliani 2.6 new features

New Features:

Multi Touch Scale & Swipe

Polygonal shapes

8-bit gray-scale color format

Enhanced data pool evaluation ($=$, $>$, $<$)

GSE: dialog selection to optimize memory footprint further

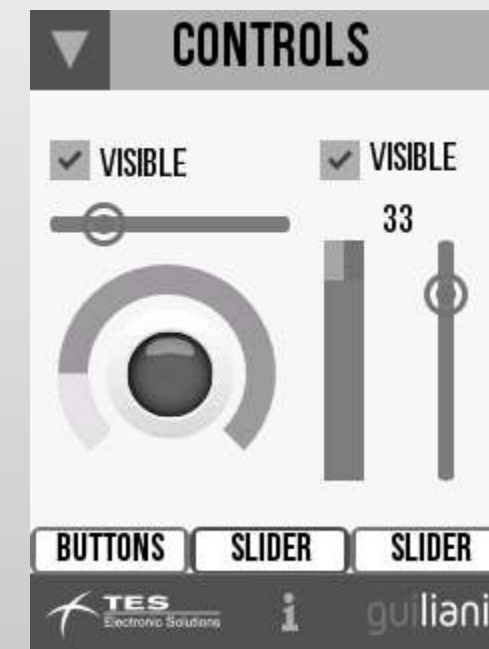
Flexible window placement

Context sensitive online help

Object filtering

Dialog resize

Performance Enhancements



Guiliani Target Applications

Guiliani excels in **all embedded applications** such as

Appliances

Automotive & transportation

Battery operated devices

Home & Building Automation

Industrial, Test & Measurement

Medical & Fitness

Wearables

Point of Sales (EPOS)



Courtesy of Lightpoint Medical



Courtesy of Medallion Instrumentation Systems

It's easy to get your hands dirty

1. Go to www.guiliani.de
2. Choose SDK/Desktop
3. Click on the Windows or Linux Download
4. Unpack the ZIP File
5. Start gse.exe (in the gse subfolder)

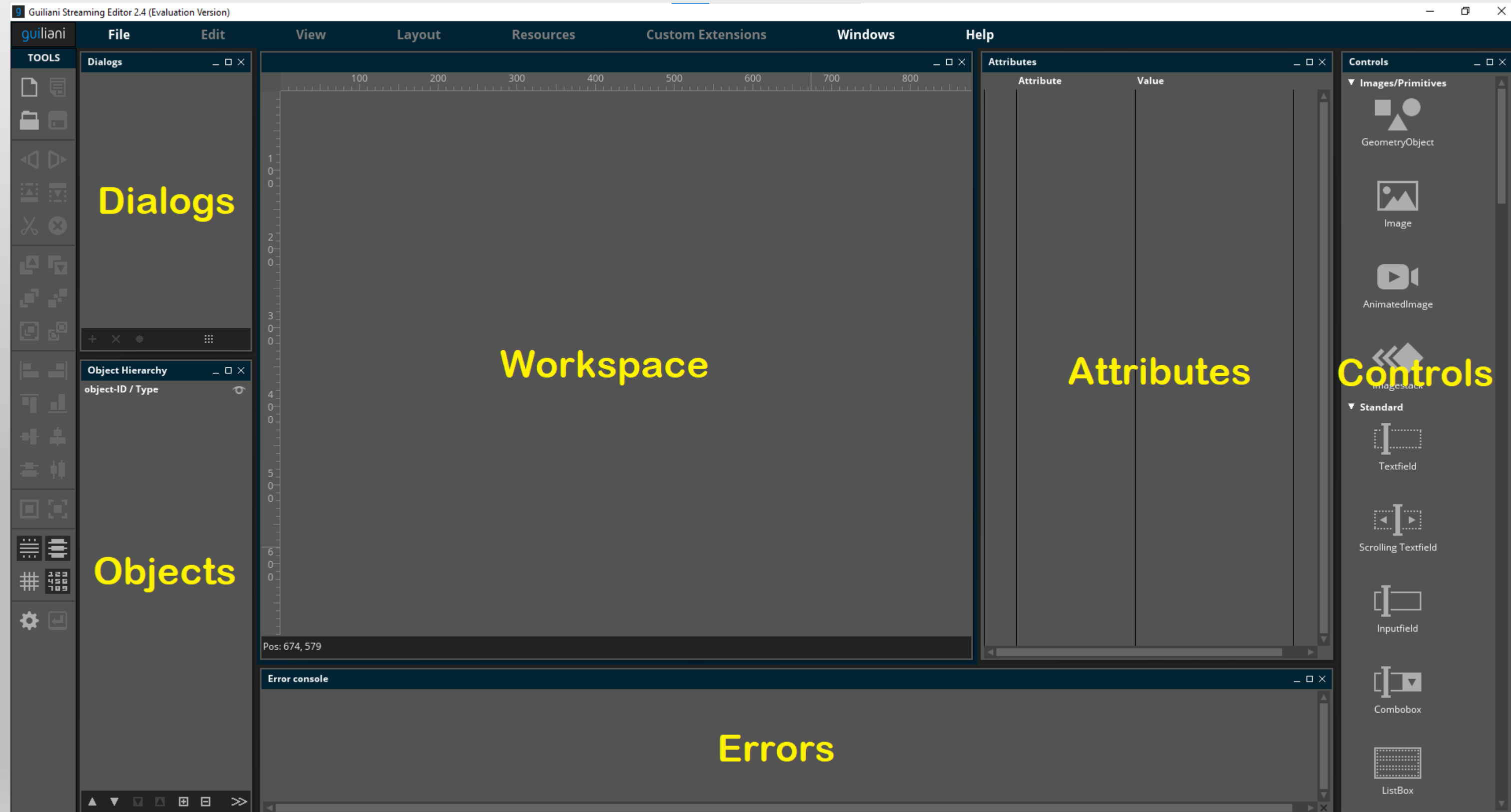
et voilà!

You are sitting in front of the
Guiliani Streaming Editor (GSE) now!

The screenshot shows the Guiliani.de website interface. At the top, there is a navigation bar with the logo 'guiliani.de', a dropdown menu for 'Guiliani', and another dropdown menu for 'SDK'. Below the navigation bar, there are three main sections: 'Desktop', 'EvalKits', and 'Windows'. The 'Windows' section is expanded, showing a list of download links for 'Guiliani 2.4 SDK including GSE (Windows/VS2015+VS2017) (2021-05-07 Rev. 6032)'. Below this, the 'Linux' section is also expanded, showing a link for 'Guiliani 2.4 SDK including GSE (Linux) (2021-05-07 Rev. 6032)'. At the bottom, a file explorer window is open, showing the contents of the 'Guiliani_SDK_2.4.0_Windows > GSE' folder. The file explorer displays a table of files and folders with columns for Name, Änderungsdatum, and Typ.

Name	Änderungsdatum	Typ
CMake	13.05.2021 13:21	Dateiordner
Examples	13.05.2021 13:21	Dateiordner
Include	13.05.2021 13:21	Dateiordner
Libraries	13.05.2021 13:21	Dateiordner
Resources	13.05.2021 13:21	Dateiordner
Simulator	13.05.2021 13:21	Dateiordner
Source	13.05.2021 13:21	Dateiordner
CMakeLists	13.05.2021 13:21	Textdokument
GSE	13.05.2021 13:21	Anwendung
GSE	13.05.2021 15:19	Textdokument

Guiliani Streaming Editor (GSE)



Guiliani = Perfect Teamwork



Mary is artist.
Uses e.g. **Photoshop**.
Delivers artwork by
e.g. USB stick...



Tahir is engineer.
Uses **Guiliani** to integrate
Mary's artwork with the inputs
from other stakeholders...

Other stakeholders, e.g. Product Management, Sales, Marketing, etc...

Guiliani Support and Services

1. Professional Support & Maintenance
2. Engineering Support, e.g. porting to your hardware/tools/OS, application binding, performance optimizations...
3. Development of custom widgets and behaviors
4. Guiliani Trainings
5. Complete turn-key developments of products...
6. ...even manufacture and supply chain management!

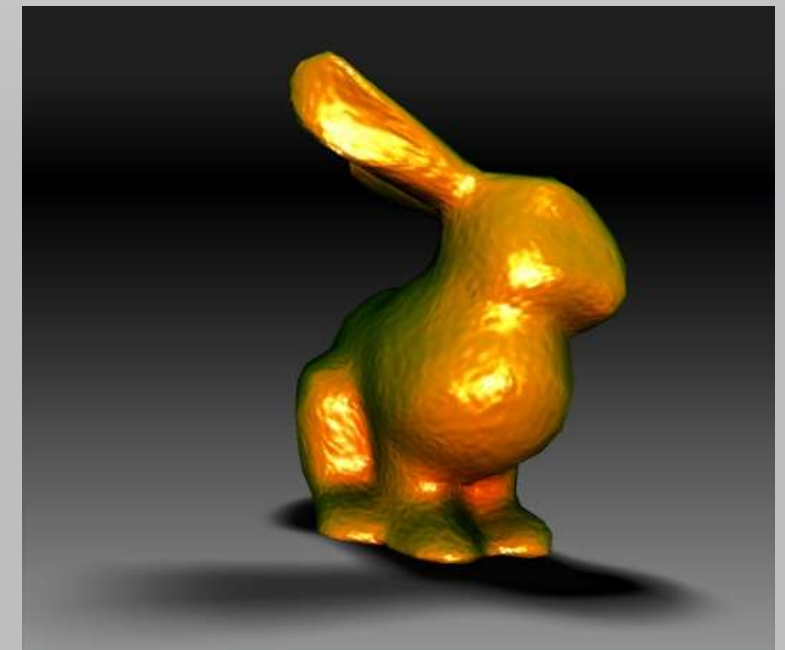


**Highest
customer
ratings!**

TES Electronic Solutions: Your holistic graphics partner

- Graphics hard- and software = core competency
- We offer **Hardware IP Blocks** for integration into MCU/MPU and usage in FPGA designs:
 - Graphics Processing Units (GPU)s “D/AVE” family
 - Configurable Display Controller (CDC)
 - Configurable Video Input Controller (CVI)
 - TES Warping Engine
- **Graphics Software** beyond Guiliani such as..
 - 3D-Surround-View Software
 - Software rendering IP
- **And any combination of the above + services!**

dave **HD** dave **NX**
dave **2D** dave **3D**



Guiliani Partner Highlight: M13Design (for Renesas RA6M3 MCU)

1. M13Design in France design excellent MCU/MPU kits
2. The latest kit is for the Renesas RA6M3 MCU:
M13-RA6M3-EK Kit with 4.3" 480x272 LCD
Spec = RA6M3, 32MB QSPI Flash, 32MB SDRAM
ethernet, USB, J-Link OB debugger, 2x PMOD,
1x mikroBUS™ and a lot more...
3. Available! Click [here](#)
4. **Highlight:** M13Design can create YOUR derivative to meet your requirements quickly and at highly competitive cost
5. Contact: info@m13design.fr

Short unboxing video: <https://youtu.be/x02L1gAE5H4>

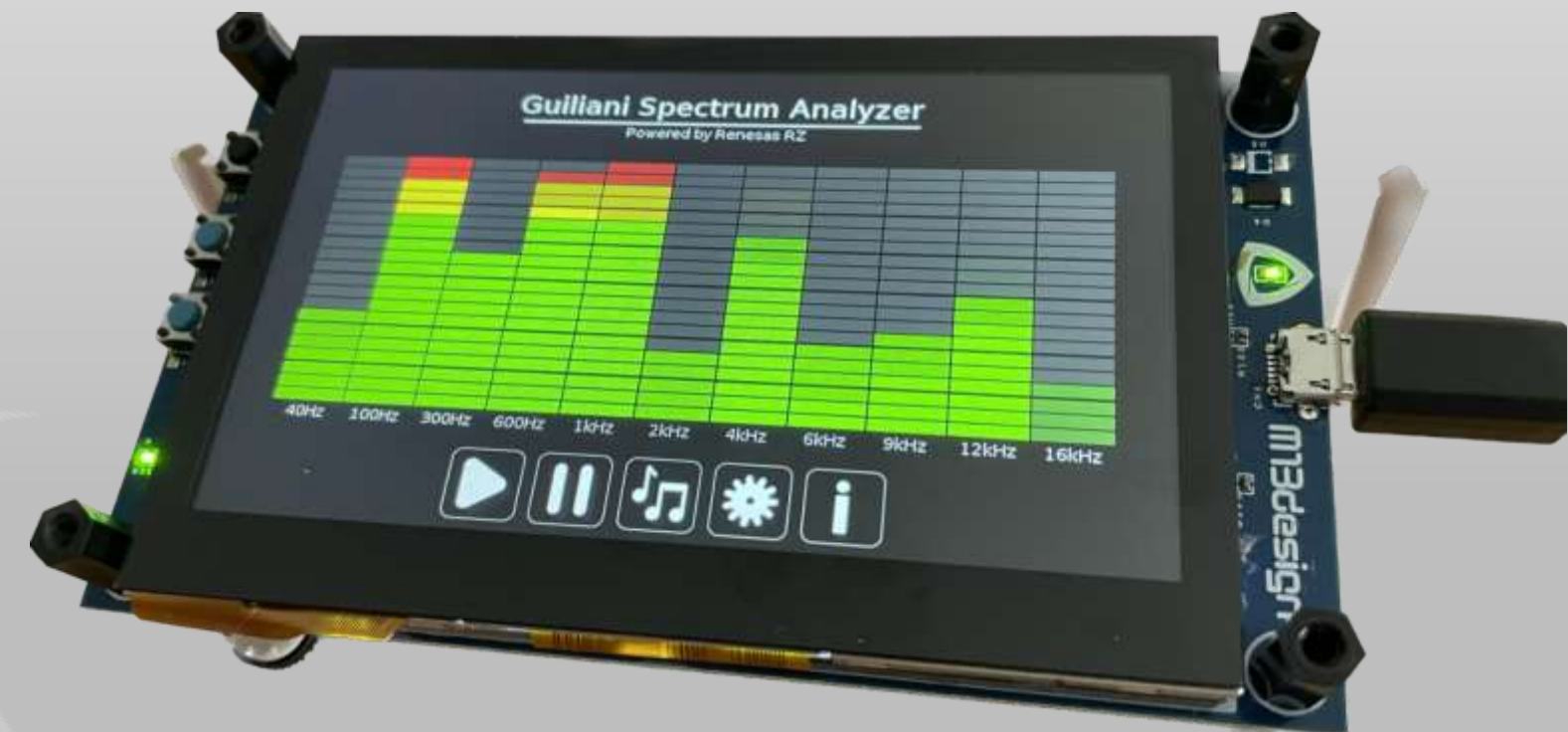


Soon: support for RA8D1
Contact info@guiliani.de

Guiliani Partner Highlight: M13Design (for Renesas RZ/A hybrid MPU)

1. Latest addition to our cooperation with M13Design
2. Uses the powerful **RZ/A2M with 528MHz Cortex A9 MPU**
4MB internal high-speed RAM, 32MB external RAM,
64MB ext serial Flash and more...
4.3" 800x480 TFT with capacitive touch
Lots of connectivity and on-board debugger...
3. Available! Click [here](#)
4. **Highlight:** Supported by „Prepaid by Renesas“
therefore a Guiliani-lite license can be obtained
for free (T&C apply).
5. Contact: info@m13design.fr

Video impression: <https://youtu.be/Pq9fn01pTvs>



Guiliani Partner Highlight: emtrion

1. emtrion STM32MP1 Support: Available NOW!
2. **emSBC-Argon: STM32MP157-based Developer Kit with Linux**
Dual ARM Cortex-A7 at 650MHz
512MB SDRAM, 2MB QSPI NOR Flash,
8GB eMMC Flash, Lots of connectivity
3. www.emtrion.com
4. **Highlight:** emSBC-Argon available in volume off the shelf for super-rapid prototyping!
5. Contact: sales@emtrion.de

Short video impression: <https://youtu.be/wMBXPtKBnoU>

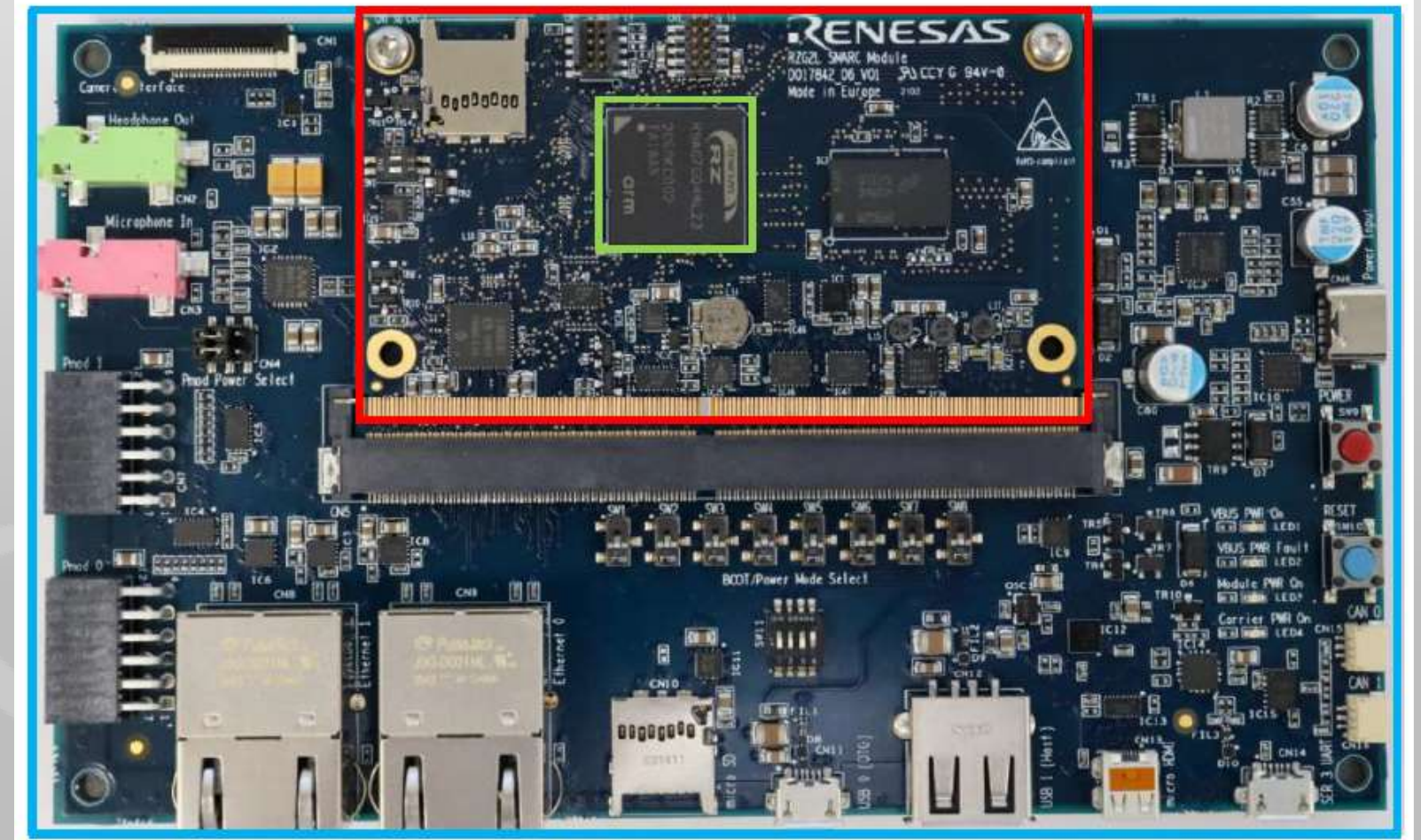


Guiliani Partner Highlight: Renesas RZ/G2L

1. High performance MPU!
Dual core Cortex A55 at 1.2GHz
2. **SMARC v2.1 Module + Carrier**
2GB DDR4 + 64GB eMMC + micro-SD
Lots of connectivity such as 2x gigabit ether, 2x USB, micro HDMI, MIPI CSI for camera and so on...
3. Civil Infrastructure Platform SLTS Linux!
Secure Middleware, Multimedia.
And of course Guiliani!
Available NOW on www.guiliani.de
4. Contact: info@guiliani.de

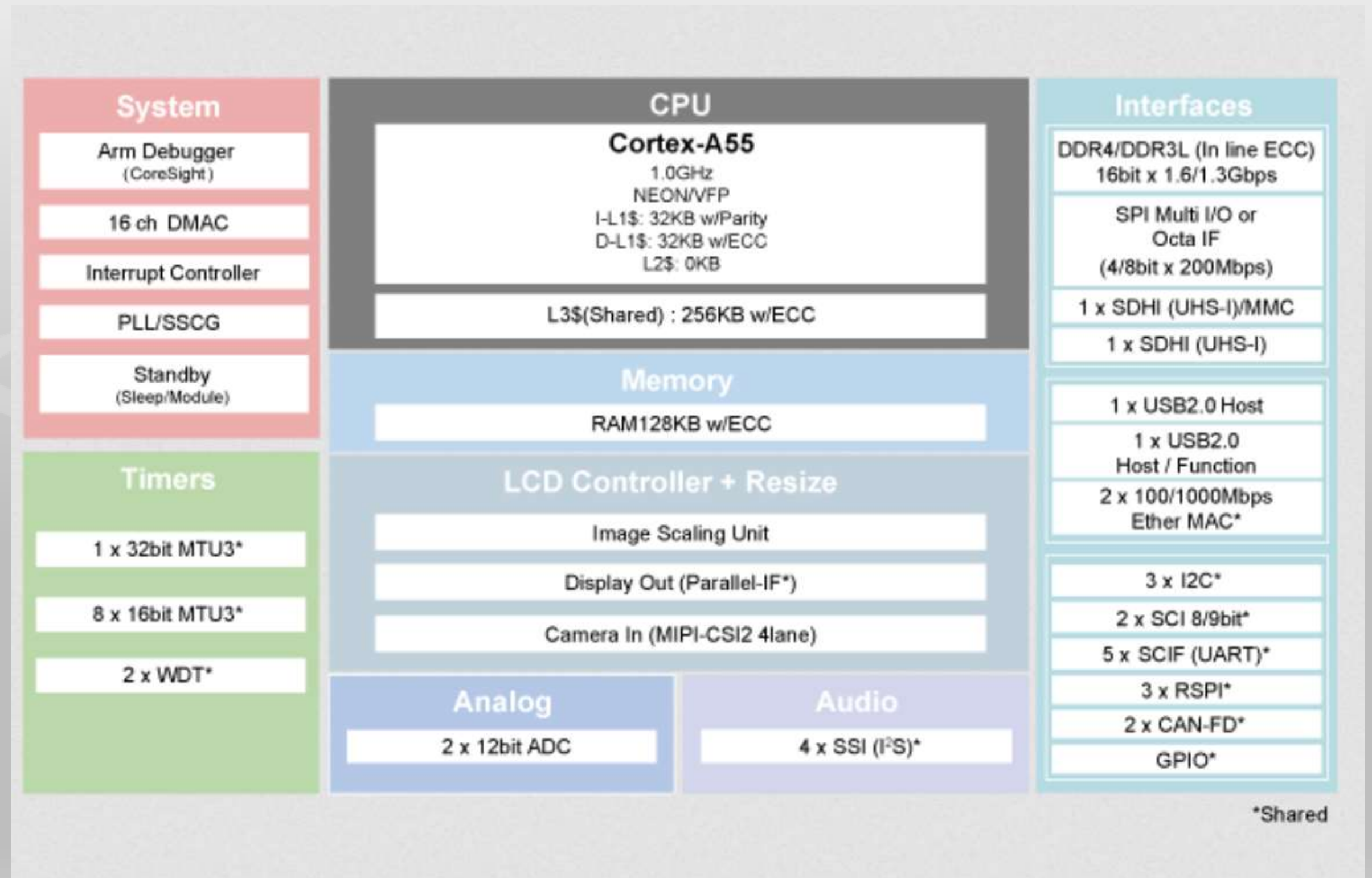
Short video impression: <https://youtu.be/1la6NwArABY>

RZ/G2L SMARC v2.1 Module board + Carrier Board
(Made by Renesas Europe)



Guiliani Partner Highlight: NEW RZ/A3UL

1. Low cost MPU
Augments RZ/A family
upwards
2. **Quick boot by
virtue of RTOS focus!**
3. **Guiliani 2.6 SDK
available now!**
4. Contact:
info@guiliani.de



Short video impression: <https://youtu.be/ck46U5zhy-M>

Guiliani Partner Highlight: New UK Partner AND Technology Research

Joint promotion and best-in-class technical support now available to our UK customers

Special focus on medical applications

CEO Dr Nicola Thorn: „AND is excited to bring Guiliani to our portfolio of technologies. It provides a seamless way to build embedded user interfaces. We are proud to be the go-to Guiliani provider in the UK and beyond.”

www.andtr.com



Guiliani Summary & Contacts

- Guiliani is a state-of-the-art, high quality, proven software product designed to empower the GUI of the best products anywhere in great style
- Customer's voice = **powerful, intuitive, innovative, perfectly scalable and well supported**
- Enables fast time-to-market, smooth teamwork and completing your projects on time and on budget
- **Please try it!** It's easy, even before you have target hardware. Because there are free desktop evaluation versions for Windows and Linux...



Joachim Hüpper
+491734181348



info@guiliani.de



www.guiliani.de

Thank you!

Stay tuned at <https://www.linkedin.com/company/tes-electronic-solutions>

